



City of Turlock

Introduction to Redistricting

October 18, 2021

Dr. Jeff Tilton, Senior Consultant
National Demographics Corporation

Redistricting Process

Step	Description
Census Data Releases	<ul style="list-style-type: none"> • Census Bureau releases official 2020 Census population data – Aug. 12 • California’s official ‘prisoner-adjusted’ 2020 redistricting data – Sept. 21, 27
Public Hearing October 18, 2021 <i>11 a.m.</i>	<ul style="list-style-type: none"> • Staff facilitated • Held prior to release of draft maps • Educate, solicit input on the communities in the Districts
Public Hearing November 8, 2021 <i>6:30 p.m.</i>	<ul style="list-style-type: none"> • Held prior to release of draft maps • Educate, solicit input on the communities in the Districts
Public Hearing January 25, 2022 <i>6:30 p.m.</i>	<ul style="list-style-type: none"> • Discuss, revise draft maps; discuss election sequencing • Deadline to submit draft maps: January 11, 2022, 5 p.m.
Public Hearing March 22, 2022 <i>6:30 p.m.</i>	<ul style="list-style-type: none"> • Discuss, determine final map; discuss, determine election sequencing • Deadline to submit draft maps: March 8, 2022, 5 p.m. • Draft maps posted deadline: March 15, 2022, 5 p.m.

Redistricting Rules and Goals

1. Federal Laws

- ❑ Equal Population
- ❑ Federal Voting Rights Act
- ❑ No Racial Gerrymandering



2. California Criteria for Cities

1. Geographically contiguous
2. Undivided neighborhoods and “communities of interest”
3. Easily identifiable boundaries
4. Compact

Prohibited: “Shall not favor or discriminate against a political party.”

3. Other Traditional Redistricting Principles

- ❑ Minimize voters shifted to different election years
- ❑ Respect voters’ choices / continuity in office
- ❑ Future population growth
- ❑ Preserving the core of existing districts

Defining Neighborhoods

1st Question: What is your neighborhood?

2nd Question: What are its geographic boundaries?

Examples of physical features defining a neighborhood boundary:

- Natural neighborhood dividing lines, such as highway or major roads, rivers, canals and/or hills
- Areas around parks or schools
- Other neighborhood landmarks

In the absence of public testimony, planning records and other similar documents may provide definition.



Beyond Neighborhoods: Defining Communities of Interest

1st Question: What defines your community?

- Geographic Area, plus
- Shared issue or characteristic
 - Shared social or economic interest
 - Impacted by county policies
- Tell us “your community’s story”

2nd Question: Would this community benefit from being “included within a single district for purposes of its effective and fair representation”?

- Or would it benefit more from having multiple representatives?

Definitions of Communities of Interest may not include relationships with political parties, incumbents, or political candidates.

Possible Neighborhoods / Communities

Public Mapping and Map Review Tools

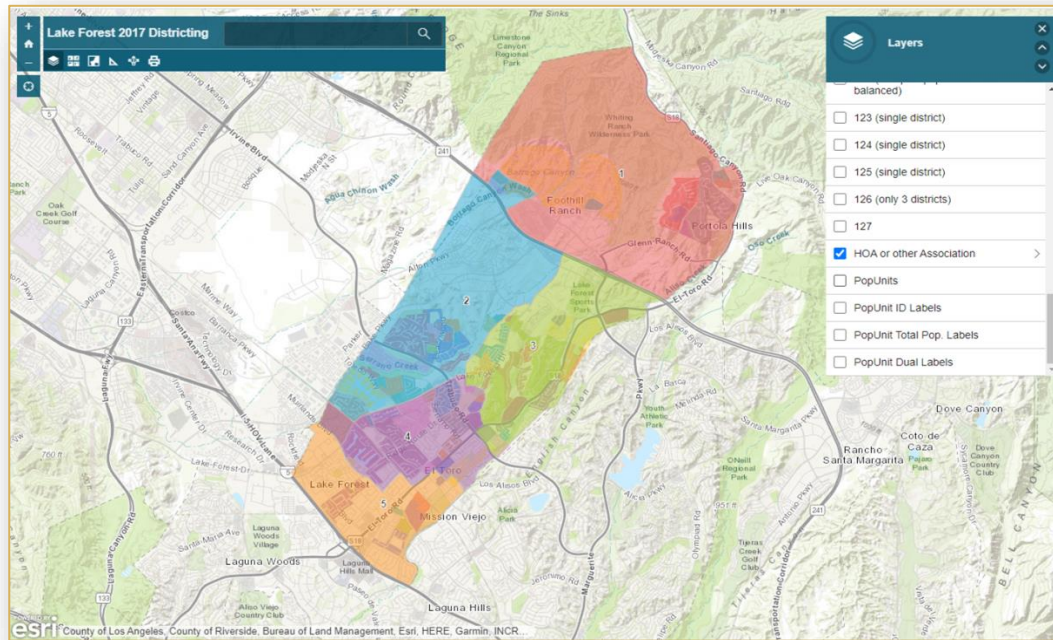
- **Different tools for different purposes**
- **Different tools for different levels of technical skill and interest**
 - Simple “review draft maps” tool
 - Easy-to-use “Draw your neighborhood” tool
 - Paper- and Excel-based simple “Draw a draft map” tools
 - Powerful, data-rich “Draw a draft map” tool
 - NEW OPTION: Submit using your own mapping software

Whether you use the powerful (but complicated) online mapping tool, Excel, the paper kit, or just draw on a napkin, we welcome your maps!

Simple Map Review Tool

Online Interactive Review Map

- ESRI's “ArcGIS Online” – similar to Google Maps in ease of use
- Used to review, analyze and compare maps, not to create them
- Includes overlays of “community of interest” and other data



Simple Map Drawing Tool

Paper “Public Participation Kit”

- For those without internet access or who prefer paper
- Total Population Counts only – no demographic numbers

Turlock Redistricting 2021

Public Participation Kit

Total Population by Population Unit

Name: _____

Phone and/or Email: _____

Please use a thick dark-colored pen to draw your map, then submit it at City Hall or by email to LSchimmelfennig@turlock.ca.us. You can hand deliver, mail, fax, scan and email, or photograph and email your map.

Each number indicates the total population of that "population unit" area. Each district must have essentially equal population. The population of each of the 4 districts must be close to 18,200, with no more than a 1,820 difference between the largest and smallest.

An online version of this map that allows you to zoom in and out for more detail is available as a link from the project website.

National Demographics Corporation,
September 20, 2021

©2017 CALIPER



Simple Map Drawing Tool + Excel Supplement

“Public Participation Kit”

- For those who know Excel and do not wish to use online tools
- Adds CVAP data
- Excel does the math

Turlock Redistricting 2021

Public Participation Kit Population Unit by ID Number

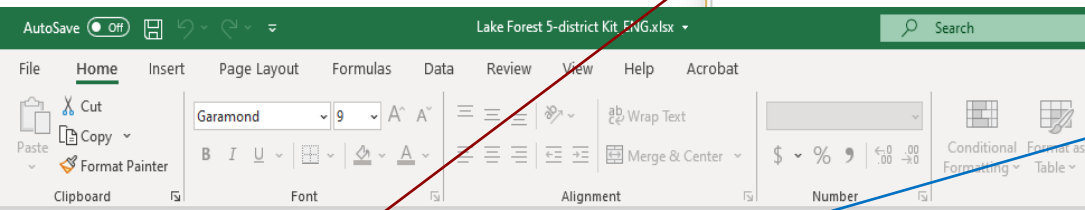
Use this map with Microsoft Excel.

Name: _____

Phone and/or Email: _____

Please use a thick dark-colored pen to draw your map, then submit it at City Hall or by email to LSchimmelfennig@turlock.ca.us. You can hand deliver, mail, fax, scan and email, or photograph and email your map.

An online version of this map that allows you to zoom in and out for more detail is available as a link from the project website.



A3																																																																																																																																																																																																																																																																																																																																																																																																																																																																																																																																																																																																																																																																																																																																																																																																																																																																																																																																																																																																																																																																																																																																																																																																																																																						</	
----	--	--	--	--	--	--	--	--	--	--	--	--	--	--	--	--	--	--	--	--	--	--	--	--	--	--	--	--	--	--	--	--	--	--	--	--	--	--	--	--	--	--	--	--	--	--	--	--	--	--	--	--	--	--	--	--	--	--	--	--	--	--	--	--	--	--	--	--	--	--	--	--	--	--	--	--	--	--	--	--	--	--	--	--	--	--	--	--	--	--	--	--	--	--	--	--	--	--	--	--	--	--	--	--	--	--	--	--	--	--	--	--	--	--	--	--	--	--	--	--	--	--	--	--	--	--	--	--	--	--	--	--	--	--	--	--	--	--	--	--	--	--	--	--	--	--	--	--	--	--	--	--	--	--	--	--	--	--	--	--	--	--	--	--	--	--	--	--	--	--	--	--	--	--	--	--	--	--	--	--	--	--	--	--	--	--	--	--	--	--	--	--	--	--	--	--	--	--	--	--	--	--	--	--	--	--	--	--	--	--	--	--	--	--	--	--	--	--	--	--	--	--	--	--	--	--	--	--	--	--	--	--	--	--	--	--	--	--	--	--	--	--	--	--	--	--	--	--	--	--	--	--	--	--	--	--	--	--	--	--	--	--	--	--	--	--	--	--	--	--	--	--	--	--	--	--	--	--	--	--	--	--	--	--	--	--	--	--	--	--	--	--	--	--	--	--	--	--	--	--	--	--	--	--	--	--	--	--	--	--	--	--	--	--	--	--	--	--	--	--	--	--	--	--	--	--	--	--	--	--	--	--	--	--	--	--	--	--	--	--	--	--	--	--	--	--	--	--	--	--	--	--	--	--	--	--	--	--	--	--	--	--	--	--	--	--	--	--	--	--	--	--	--	--	--	--	--	--	--	--	--	--	--	--	--	--	--	--	--	--	--	--	--	--	--	--	--	--	--	--	--	--	--	--	--	--	--	--	--	--	--	--	--	--	--	--	--	--	--	--	--	--	--	--	--	--	--	--	--	--	--	--	--	--	--	--	--	--	--	--	--	--	--	--	--	--	--	--	--	--	--	--	--	--	--	--	--	--	--	--	--	--	--	--	--	--	--	--	--	--	--	--	--	--	--	--	--	--	--	--	--	--	--	--	--	--	--	--	--	--	--	--	--	--	--	--	--	--	--	--	--	--	--	--	--	--	--	--	--	--	--	--	--	--	--	--	--	--	--	--	--	--	--	--	--	--	--	--	--	--	--	--	--	--	--	--	--	--	--	--	--	--	--	--	--	--	--	--	--	--	--	--	--	--	--	--	--	--	--	--	--	--	--	--	--	--	--	--	--	--	--	--	--	--	--	--	--	--	--	--	--	--	--	--	--	--	--	--	--	--	--	--	--	--	--	--	--	--	--	--	--	--	--	--	--	--	--	--	--	--	--	--	--	--	--	--	--	--	--	--	--	--	--	--	--	--	--	--	--	--	--	--	--	--	--	--	--	--	--	--	--	--	--	--	--	--	--	--	--	--	--	--	--	--	--	--	--	--	--	--	--	--	--	--	--	--	--	--	--	--	--	--	--	--	--	--	--	--	--	--	--	--	--	--	--	--	--	--	--	--	--	--	--	--	--	--	--	--	--	--	--	--	--	--	--	--	--	--	--	--	--	--	--	--	--	--	--	--	--	--	--	--	--	--	--	--	--	--	--	--	--	--	--	--	--	--	--	--	--	--	--	--	--	--	--	--	--	--	--	--	--	--	--	--	--	--	--	--	--	--	--	--	--	--	--	--	--	--	--	--	--	--	--	--	--	--	--	--	--	--	--	--	--	--	--	--	--	--	--	--	--	--	--	--	--	--	--	--	--	--	--	--	--	--	--	--	--	--	--	--	--	--	--	--	--	--	--	--	--	--	--	--	--	--	--	--	--	--	--	--	--	--	--	--	--	--	--	--	--	--	--	--	--	--	--	--	--	--	--	--	--	--	--	--	--	--	--	--	--	--	--	--	--	--	--	--	--	--	--	--	--	--	--	--	--	--	--	--	--	--	--	--	--	--	--	--	--	--	--	--	--	--	--	--	--	--	--	--	--	--	--	--	--	--	--	--	--	--	--	--	--	--	--	--	--	--	--	--	--	--	--	--	--	--	--	--	--	--	--	--	--	--	--	--	--	--	--	--	--	--	--	--	--	--	--	--	--	--	--	--	--	--	--	--	--	--	--	--	--	--	--	--	--	--	--	--	--	--	--	--	--	--	--	--	--	--	--	--	--	--	--	--	--	--	--	--	--	--	--	--	--	--	--	--	--	--	--	--	--	--	--	--	--	--	--	--	--	--	--	--	--	--	--	--	--	--	--	--	--	--	--	--	--	--	--	--	--	--	--	--	--	--	--	--	--	--	--	--	--	--	--	--	--	--	--	--	--	--	--	--	--	--	--	--	--	--	--	--	--	--	--	--	--	--	--	--	--	--	--	--	--	--	--	--	--	--	--	--	--	--	--	--	--	--	--	--	--	--	--	--	--	--	--	--	--	--	--	--	--	--	--	--	--	--	--	--	--	--	--	--	--	--	--	--	--	--	--	--	--	--	--	--	--	--	--	--	--	--	--	--	--	--	--	--	--	--	--	--	--	--	--	--	--	--	--	--	--	--	--	--	--	--	--	--	--	--	--	--	--	--	--	--	--	--	--	--	--	--	--	--	--	--	--	--	--	--	--	--	--	--	--	--	--	--	--	--	--	--	--	--	--	--	--	--	--	--	--	--	--	--	--	--	--	--	--	----	--

Sums by District Assigned		Ideal population: 15,314																			
City of San Buenaventura 2017 Public Participation Kit																					
		enter your name here																			
		Counts										Percentages									
Group	Category	1	2	3	4	5	6	7	Unassigned	Total	1	2	3	4	5	6	7	Unassigned	Total		
Total Population	Tot. Pop.	0	0	0	0	0	0	0	107,197	107,197	0	-100%	-100%	-100%	-100%	-100%	-100%	-100%	0.00%		
	Deviation from Ideal	-15,314	-15,314	-15,314	-15,314	-15,314	-15,314	-15,314													
	Hispanic	0	0	0	0	0	0	0	34,182	34,182	#DIV/0!	#DIV/0!	#DIV/0!	#DIV/0!	#DIV/0!	#DIV/0!	#DIV/0!	#DIV/0!	32%		
	NH WH	0	0	0	0	0	0	0	64,294	64,294	#DIV/0!	#DIV/0!	#DIV/0!	#DIV/0!	#DIV/0!	#DIV/0!	#DIV/0!	#DIV/0!	60%		
	NH BLK	0	0	0	0	0	0	0	1,919	1,919	#DIV/0!	#DIV/0!	#DIV/0!	#DIV/0!	#DIV/0!	#DIV/0!	#DIV/0!	#DIV/0!	2%		
Young Age Population	NH A	0	0	0	0	0	0	0	4,530	4,530	#DIV/0!	#DIV/0!	#DIV/0!	#DIV/0!	#DIV/0!	#DIV/0!	#DIV/0!	#DIV/0!	4%		
	Total VAP	0	0	0	0	0	0	0	83,090	83,090	#DIV/0!	#DIV/0!	#DIV/0!	#DIV/0!	#DIV/0!	#DIV/0!	#DIV/0!	#DIV/0!	21%		
	Hispanic	0	0	0	0	0	0	0	22,928	22,928	#DIV/0!	#DIV/0!	#DIV/0!	#DIV/0!	#DIV/0!	#DIV/0!	#DIV/0!	#DIV/0!	28%		
	NH WH	0	0	0	0	0	0	0	53,687	53,687	#DIV/0!	#DIV/0!	#DIV/0!	#DIV/0!	#DIV/0!	#DIV/0!	#DIV/0!	#DIV/0!	50%		
	NH BLK	0	0	0	0	0	0	0	3,491	3,491	#DIV/0!	#DIV/0!	#DIV/0!	#DIV/0!	#DIV/0!	#DIV/0!	#DIV/0!	#DIV/0!	3%		
Citizen Voting Population	NH A	0	0	0	0	0	0	0	77,063	77,063	#DIV/0!	#DIV/0!	#DIV/0!	#DIV/0!	#DIV/0!	#DIV/0!	#DIV/0!	#DIV/0!	72%		
	Total CVAP	0	0	0	0	0	0	0	18,936	18,936	#DIV/0!	#DIV/0!	#DIV/0!	#DIV/0!	#DIV/0!	#DIV/0!	#DIV/0!	#DIV/0!	4%		
	Hispanic	0	0	0	0	0	0	0	52,843	52,843	#DIV/0!	#DIV/0!	#DIV/0!	#DIV/0!	#DIV/0!	#DIV/0!	#DIV/0!	#DIV/0!	49%		
	NH WH	0	0	0	0	0	0	0	1,675	1,675	#DIV/0!	#DIV/0!	#DIV/0!	#DIV/0!	#DIV/0!	#DIV/0!	#DIV/0!	#DIV/0!	2%		
	NH BLK	0	0	0	0	0	0	0	2,630	2,630	#DIV/0!	#DIV/0!	#DIV/0!	#DIV/0!	#DIV/0!	#DIV/0!	#DIV/0!	#DIV/0!	2%		
Nov 2014 Registration	NH A	0	0	0	0	0	0	0	63,996	63,996	#DIV/0!	#DIV/0!	#DIV/0!	#DIV/0!	#DIV/0!	#DIV/0!	#DIV/0!	#DIV/0!	80%		
	Total Reg.	0	0	0	0	0	0	0	13,374	13,374	#DIV/0!	#DIV/0!	#DIV/0!	#DIV/0!	#DIV/0!	#DIV/0!	#DIV/0!	#DIV/0!	1%		
	Hispanic	0	0	0	0	0	0	0	1,180	1,180	#DIV/0!	#DIV/0!	#DIV/0!	#DIV/0!	#DIV/0!	#DIV/0!	#DIV/0!	#DIV/0!	8%		
	NH WH	0	0	0	0	0	0	0	463	463	#DIV/0!	#DIV/0!	#DIV/0!	#DIV/0!	#DIV/0!	#DIV/0!	#DIV/0!	#DIV/0!	0%		
	NH BLK	0	0	0	0	0	0	0	30,448	30,448	#DIV/0!	#DIV/0!	#DIV/0!	#DIV/0!	#DIV/0!	#DIV/0!	#DIV/0!	#DIV/0!	28%		
Nov 2014 Votes	NH A	0	0	0	0	0	0	0	4,317	4,317	#DIV/0!	#DIV/0!	#DIV/0!	#DIV/0!	#DIV/0!	#DIV/0!	#DIV/0!	#DIV/0!	23%		
	Total Votes	0	0	0	0	0	0	0	461	461	#DIV/0!	#DIV/0!	#DIV/0!	#DIV/0!	#DIV/0!	#DIV/0!	#DIV/0!	#DIV/0!	0%		
	Hispanic	0	0	0	0	0	0	0	181	181	#DIV/0!	#DIV/0!	#DIV/0!	#DIV/0!	#DIV/0!	#DIV/0!	#DIV/0!	#DIV/0!	4%		
	NH WH	0	0	0	0	0	0	0	164	164	#DIV/0!	#DIV/0!	#DIV/0!	#DIV/0!	#DIV/0!	#DIV/0!	#DIV/0!	#DIV/0!	0%		
	NH BLK	0	0	0	0	0	0	0			#DIV/0!	#DIV/0!	#DIV/0!	#DIV/0!	#DIV/0!	#DIV/0!	#DIV/0!	#DIV/0!			
Submitter's Comments about the plan:																					
I think this map makes sense because ...																					

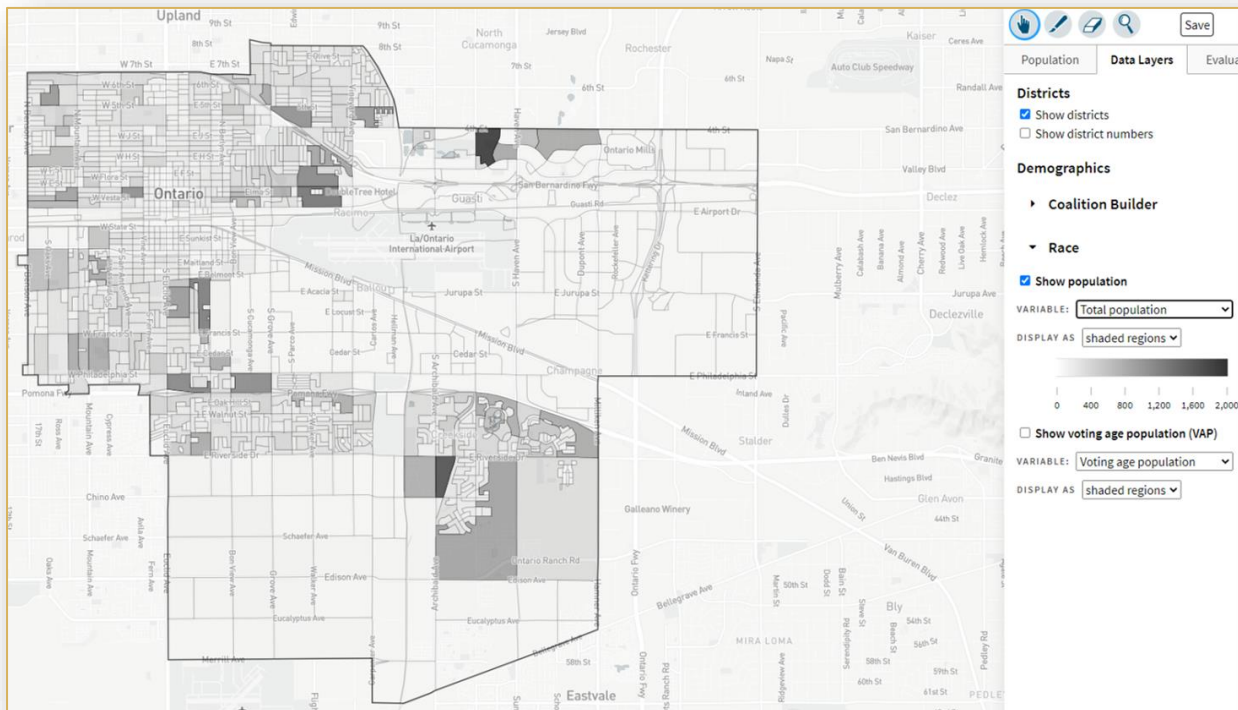
Submitter's Comments about the plan:

Please enter your name and address here:

DistrictR

“Draw Your Community of Interest” focus

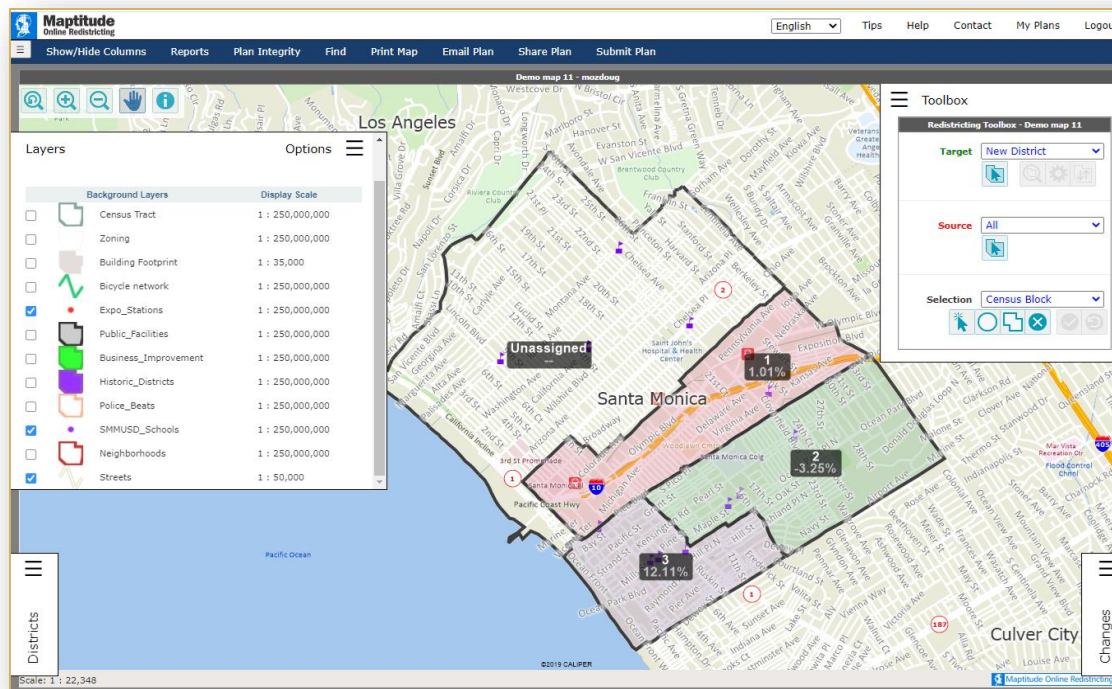
- www.DistrictR.org
- Also includes simple district-mapping tool; Only available in English
- Similar external options: Representable.org, DrawMyCACommunity.org



Caliper's “Maptitude Online Redistricting”

Full Database, Powerful Online Mapping Tool

- Powerful, common, data-rich online tool
- Six language options: English, Spanish, Portuguese, Vietnamese, Mandarin and Korean



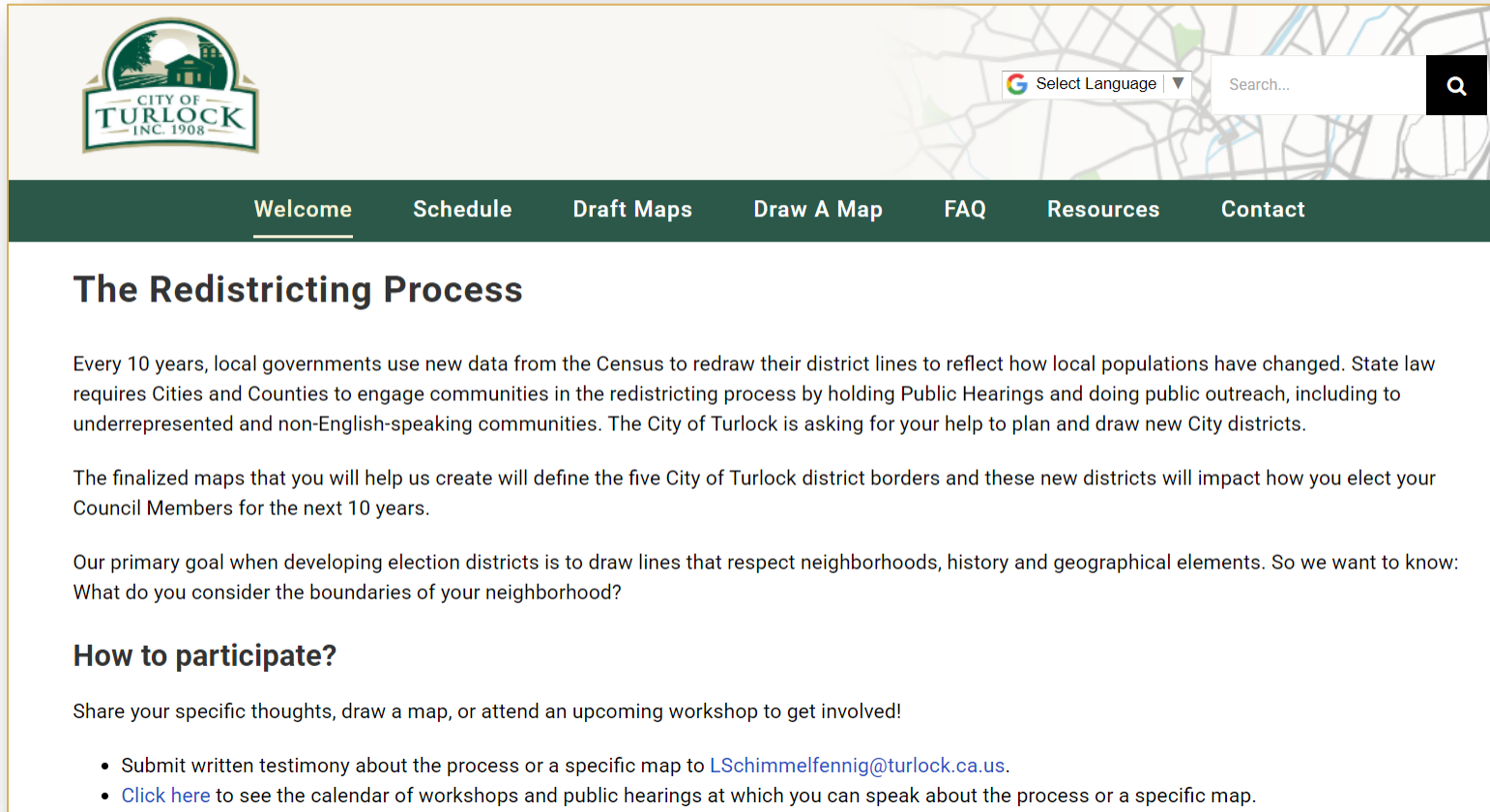
Public Hearing & Discussion

- What is your neighborhood and what are its boundaries?
- What other notable areas are in the City, and what are their boundaries?
- Any questions about the mapping tools?

Discussion on:

- “neighborhoods”
- “communities of interest . . . that should be included within a single district for purposes of its effective and fair representation.”

Stay Connected



The screenshot shows the City of Turlock website. At the top left is the City of Turlock logo, which includes a house and the text 'CITY OF TURLOCK INC. 1908'. To the right of the logo is a 'Select Language' dropdown menu and a search bar with a magnifying glass icon. Below the header is a dark green navigation bar with white text links: 'Welcome', 'Schedule', 'Draft Maps', 'Draw A Map', 'FAQ', 'Resources', and 'Contact'. The main content area has a white background. The title 'The Redistricting Process' is in a bold, dark font. Below the title is a paragraph of text explaining the redistricting process. This is followed by another paragraph. Then, a section titled 'How to participate?' is shown, followed by a paragraph and a bulleted list of instructions for participation.

The Redistricting Process

Every 10 years, local governments use new data from the Census to redraw their district lines to reflect how local populations have changed. State law requires Cities and Counties to engage communities in the redistricting process by holding Public Hearings and doing public outreach, including to underrepresented and non-English-speaking communities. The City of Turlock is asking for your help to plan and draw new City districts.

The finalized maps that you will help us create will define the five City of Turlock district borders and these new districts will impact how you elect your Council Members for the next 10 years.

Our primary goal when developing election districts is to draw lines that respect neighborhoods, history and geographical elements. So we want to know: What do you consider the boundaries of your neighborhood?

How to participate?

Share your specific thoughts, draw a map, or attend an upcoming workshop to get involved!

- Submit written testimony about the process or a specific map to LSchimmelfennig@turlock.ca.us.
- [Click here](#) to see the calendar of workshops and public hearings at which you can speak about the process or a specific map.

RedistrictTurlock.org

LSchimmelfennig@turlock.ca.us | 209.668.5540